

# PRODUCT CATALOGUE

—  
Optical Fibre Patch Panels



**25/26** Collection



INTRODUCTION



# CONTENTS

## 6-9

19" 1U Sliding Patch Panels

## 12-14

Front Panels

## 16-19

Recessed Panels

## 22

How to Order

### EMAIL

[sales@matrixgn.com](mailto:sales@matrixgn.com)

### PHONE

+44 (0) 1908 951000

FastFibre panels are designed with an emphasis on ease-of-use and access. They allow for up to 96 connections per 1U. The panels are available empty, preloaded or configured with blanks and cable management to suit your requirements. Their shallow depth allows for installation in all standard 19" racks and wall-mount enclosures.

### Features & Benefits

- 1U 19" panels (black standard, other colours to order)
- LC, SC, ST, FC or E2000 adaptors
- Sliding tray for easy access complete with quick release fastenings and 45° working position
- Rigid, lightweight construction
- Recessed adaptors and mounting ears to maximise space for patching
- Large port identification write-on fields
- Interchangeable front plate for maximum flexibility
- Raised slots in the panel base allow for customised fibre-management configurations and additional securing for incoming cables
- Knock out entry for large diameter cables

# Next Generation 1U Sliding Patch Panels

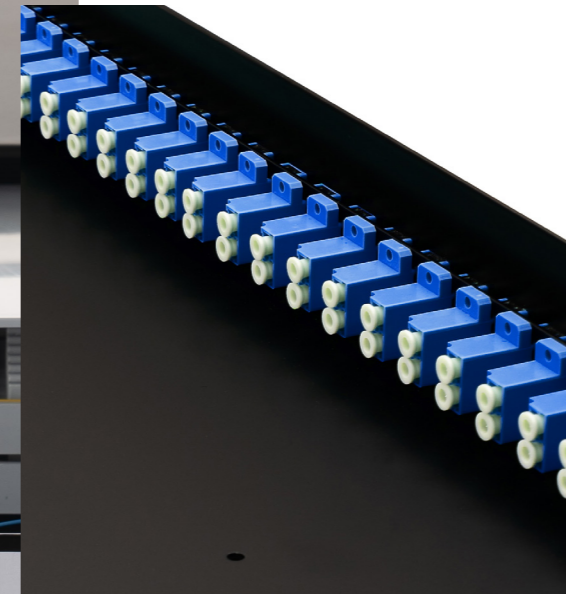
Our optical fibre patch panels are designed to seamlessly integrate with our pre-terminated assemblies, providing a hassle-free and efficient solution for fibre optic installations. By offering a plug-and-play approach, our pre-terminated fibre assemblies simplify installation processes, reduce deployment time, and guarantee reliable connectivity between the patch panel and the network infrastructure.



1U 19" patch panels come in black as standard - alternative colours available to order

## 45° Locking Angle

This provides the perfect working platform for simple installation or easy maintenance and access even after the panel is installed in the rack.



### Features & Benefits

- LC, SC, ST, FC or E2000 adaptors.
- Robust, lightweight construction, made from 1.2mm cold rolled steel.
- Screen powder coated for superior finish and durability.
- Recessed adaptors and mounting ears to maximise space for patching.
- Large port identification write-on fields.
- Interchangeable front plate for maximum flexibility.
- Easy style mounting ears, with fixing points for universal front management.
- M20 cable entry more commonly used, moved to exterior to improve routing into panel.
- Easy slot feature allows direct attachment of FastFibre breakout manifold.
- Strength member tie point mounting positions or bend radius management.
- Centre post or DIN style splice tray mounting positions.
- Inner recessed plate designed to hold adaptors tighter (no screws).
- Pull, push mechanism to lock and release sliding panel.
- Supplied with fibre management kit, also available separately.

## Up to 96 Fibres

FastFibre sliding patch panels are designed with an emphasis on ease-of-use and access. They allow for up to 96 connections per 1U (LC Quad). The panels are available empty, preloaded or configured with blanks and cable management to suit customer requirements. Their shallow depth allows for installation in all standard 19" racks and wall mount enclosures.



Available **Pre-loaded** fully populated with adaptors and pigtails

The "preloaded" concept saves the installer valuable installation time and reduces on-site packaging. Further enhancements include the supply of a factory terminated and tested assemblies that can be preloaded into the panel and packaged for shipment to site, again saving valuable on-site install time.

## Complete Tray Release

When moved to the side the rear will pass the latch point to allow the tray to be removed with the gland or manifold in place. With existing products, the gland can only be fitted with the entire panel removed from the rack and then the tray removed.

### FASTFIBRE

Our fibre manifold makes efficient use of space and allows for quick installation. These, coupled with our most recent design of patch panel, create an unrivalled solution to fibre management. Our manifold's compatibility with our panel eliminates the need for glands, by simply slotting into the back and clicking securely into place.



# Singlemode 1U Sliding Patch Panels

Our 19" 1U removable front-panel chassis comes in two parts, a sliding chassis and a separate removable adaptor front plate. The panel chassis solution offers the flexibility to interchange adaptor front plates to suit most configurations. Installers will appreciate the flexibility to hold stock of the chassis and the front plates independently.



## OS2 Adaptor Type

Fibre Count

	LC/UPC	SC/UPC	ST/UPC	FC/UPC	E2000/UPC
4	PSLCSM4	PSSCSM4	PSSTSM4	PSFCSM4	PSE2SM4
8	PSLCSM8	PSSCSM8	PSSTSM8	PSFCSM8	PSE2SM8
12	PSLCSM12	PSSCSM12	PSSTSM12	PSFCSM12	PSE2SM12
16	PSLCSM16	PSSCSM16	PSSTSM16	PSFCSM16	PSE2SM16
24	PSLCSM24	PSSCSM24*	PSSTSM24	PSFCSM24	PSE2SM24
48	PSLCSM48	PSSCSM48	PSSTSM48		
96	PSLCSM96				



\*Available in both simplex and duplex variants.

## OS2/APC Adaptor Type

Fibre Count

	LC/APC	SC/APC	ST/APC	FC/APC	E2000/APC
4	PSLCASM4	PSSCASM4	PSSTASM4	PSFCASM4	PSE2ASM4
8	PSLCASM8	PSSCASM8	PSSTASM8	PSFCASM8	PSE2ASM8
12	PSLCASM12	PSSCASM12	PSSTASM12	PSFCASM12	PSE2ASM12
16	PSLCASM16	PSSCASM16	PSSTASM16	PSFCASM16	PSE2ASM16
24	PSLCASM24	PSSCASM24*	PSSTASM24	PSFCASM24	PSE2ASM24
48	PSLCASM48	PSSCASM48	PSSTASM48		
96	PSLCASM96				



\*Available in both simplex and duplex variants.

## Optical Fibre Management Kit

Organised cable management pays off in terms of reliability, efficiency, and overall network performance. It plays an important role in ensuring optical fibre pigtailed are protected from excessive strain and bending.

Well-managed patch panels allow for easy expansion. As your network grows, you can add or replace fibres without disrupting existing connections.



Fibre Management Kit including; windmill bases, bunny clips, splice bridge, cable ties, M20 gland and adhesive pads

## Optical Fibre Cleaning Tools & Accessories

Proper cleaning of optical fibre cables is of utmost importance to ensure optimal performance and reliability in fibre optic systems. Over time, contaminants such as dust, dirt, oils, and moisture can accumulate on the fibre connectors and end faces, leading to signal loss, increased reflectance, and potential network failures. Thorough cleaning is essential to maintain low insertion loss, minimise signal degradation and prevent costly downtime.



FastFibre Core Cleaners



Optical Connector Cleaner  
Cleaning Tape



Kimtech Wipes (280)



Fibre Optic Cleaning Bottle  
Dispenser (250ml)

# Multimode 1U Sliding Patch Panels

Our 19" 1U removable front-panel chassis comes in two parts, a sliding chassis and a separate removable adaptor front plate. The panel chassis solution offers the flexibility to interchange adaptor front plates to suit most configurations. Installers will appreciate the flexibility to hold stock of the chassis and the front plates independently.



## OM1 Adaptor Type

	LC	SC	ST	FC	E2000
<b>Fibre Count</b> 4	PS1LCMM4	PS1SCMM4	PS1STMM4	PS1FCMM4	PS1E2MM4
8	PS1LCMM8	PS1SCMM8	PS1STMM8	PS1FCMM8	PS1E2MM8
12	PS1LCMM12	PS1SCMM12	PS1STMM12	PS1FCMM12	PS1E2MM12
16	PS1LCMM16	PS1SCMM16	PS1STMM16	PS1FCMM16	PS1E2MM16
24	PS1LCMM24	PS1SCMM24*	PS1STMM24	PS1FCMM24	PS1E2MM24
48	PS1LCMM48	PS1SCMM48	PS1STMM48		
96	PS1LCMM96				

\*Available in both simplex and duplex variants.



## OM3 Adaptor Type

	LC	SC	ST	FC	E2000
<b>Fibre Count</b> 4	PS3LCMM4/AQ	PS3SCMM4/AQ	PS3STMM4	PS3FCMM4	PS3E2MM4
8	PS3LCMM8/AQ	PS3SCMM8/AQ	PS3STMM8	PS3FCMM8	PS3E2MM8
12	PS3LCMM12/AQ	PS3SCMM12/AQ	PS3STMM12	PS3FCMM12	PS3E2MM12
16	PS3LCMM16/AQ	PS3SCMM16/AQ	PS3STMM16	PS3FCMM16	PS3E2MM16
24	PS3LCMM24/AQ	PS3SCMM24/AQ*	PS3STMM24	PS3FCMM24	PS3E2MM24
48	PS3LCMM48/AQ	PS3SCMM48/AQ	PS3STMM48		
96	PS3LCMM96/AQ				

\*Available in both simplex and duplex variants.



## OM2 Adaptor Type

	LC	SC	ST	FC	E2000
<b>Fibre Count</b> 4	PS2LCMM4	PS2SCMM4	PS2STMM4	PS2FCMM4	PS2E2MM4
8	PS2LCMM8	PS2SCMM8	PS2STMM8	PS2FCMM8	PS2E2MM8
12	PS2LCMM12	PS2SCMM12	PS2STMM12	PS2FCMM12	PS2E2MM12
16	PS2LCMM16	PS2SCMM16	PS2STMM16	PS2FCMM16	PS2E2MM16
24	PS2LCMM24	PS2SCMM24*	PS2STMM24	PS2FCMM24	PS2E2MM24
48	PS2LCMM48	PS2SCMM48	PS2STMM48		
96	PS2LCMM96				

\*Available in both simplex and duplex variants.



## OM4 Adaptor Type

	LC	SC	ST	FC	E2000
<b>Fibre Count</b> 4	PS4LCMM4/EV	PS4SCMM4/EV	PS4STMM4	PS4FCMM4	PS4E2MM4
8	PS4LCMM8/EV	PS4SCMM8/EV	PS4STMM8	PS4FCMM8	PS4E2MM8
12	PS4LCMM12/EV	PS4SCMM12/EV	PS4STMM12	PS4FCMM12	PS4E2MM12
16	PS4LCMM16/EV	PS4SCMM16/EV	PS4STMM16	PS4FCMM16	PS4E2MM16
24	PS4LCMM24/EV	PS4SCMM24/EV*	PS4STMM24	PS4FCMM24	PS4E2MM24
48	PS4LCMM48/EV	PS4SCMM48/EV	PS4STMM48		
96	PS4LCMM96/EV				

\*Available in both simplex and duplex variants.



# Introducing our **Pre-Terminated Solutions**

## **M20 Cable Gland**

Allows the cables to be mounted into pre-drilled holes, while offering excellent strain relief and cable protection.

## **Protective Tube**

Offers excellent protection to staggered tails and also features a high strength pulling eye.

## **Pulling Eye**

A high strength pulling eye allows for fibre cables to be pulled through ducts or others specs for installation.

## **Staggered Tails**

Our standard tail configuration. Staggered tails are supplied in protective tubing, offering guaranteed protection during transportation and installation.



## **Recyclable Cable Drum**

Any assemblies greater than 50m in length are supplied on a wooden cable drum.

## **FastFibre Manifold**

Directly compatible with our fibre patch panels, the FastFibre manifolds provide an unrivaled solution to fibre management.

## **Ruggedised Tails**

2mm and 2.4mm tails provide extra protection and allow for directly plugging into equipment.

## **Fan-out Tails**

Also known as straight tails, are supplied in a protective bag/bubble wrap.



Product shown is singlemode LC Uniboot to LC Uniboot, just one example of our pre-terminated solutions. Other options are available.

# Singlemode 1U Front Panels

Our 19" 1U removable front-panel chassis comes in two parts, a sliding chassis and a separate removable adaptor front plate. The panel chassis solution offers the flexibility to interchange adaptor front plates to suit most configurations. Installers will appreciate the flexibility to hold stock of the chassis and the front plates independently.



## OS2 Adaptor Type

Fibre Count	LC/UPC	SC/UPC	ST/UPC	FC/UPC	E2000/UPC
4	FPLCSM4	FPSCSM4	FPSTSM4	FPFCSM4	FPE2SM4
8	FPLCSM8	FPSCSM8	FPSTSM8	FPFCSM8	FPE2SM8
12	FPLCSM12	FPSCSM12	FPSTSM12	FPFCSM12	FPE2SM12
16	FPLCSM16	FPSCSM16	FPSTSM16	FPFCSM16	FPE2SM16
24	FPLCSM24	FPSCSM24*	FPSTSM24	FPFCSM24	FPE2SM24
48	FPLCSM48	FPSCSM48	FPSTSM48		
96	FPLCSM96				

\*Available in both simplex and duplex variants.



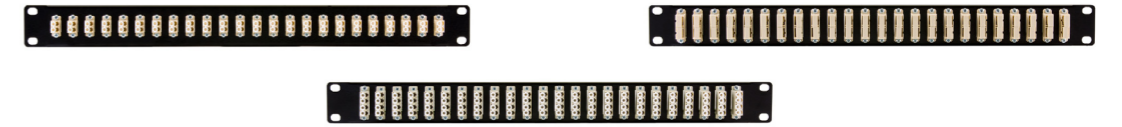
## OS2/APC Adaptor Type

Fibre Count	LC/APC	SC/APC	ST/APC	FC/APC	E2000/APC
4	FPLCASM4	FPSCASM4	FPSTASM4	FPFCASM4	FPE2ASM4
8	FPLCASM8	FPSCASM8	FPSTASM8	FPFCASM8	FPE2ASM8
12	FPLCASM12	FPSCASM12	FPSTASM12	FPFCASM12	FPE2ASM12
16	FPLCASM16	FPSCASM16	FPSTASM16	FPFCASM16	FPE2ASM16
24	FPLCASM24	FPSCASM24*	FPSTASM24	FPFCASM24	FPE2ASM24
48	FPLCASM48	FPSCASM48	FPSTASM48		
96	FPLCASM96				

\*Available in both simplex and duplex variants.



# Multimode 1U Front Panels



## OM1 Adaptor Type

Fibre Count	LC	SC	ST	FC	E2000
4	FP1LCMM4	FP1SCMM4	FP1STMM4	FP1FCMM4	FP1E2MM4
8	FP1LCMM8	FP1SCMM8	FP1STMM8	FP1FCMM8	FP1E2MM8
12	FP1LCMM12	FP1SCMM12	FP1STMM12	FP1FCMM12	FP1E2MM12
16	FP1LCMM16	FP1SCMM16	FP1STMM16	FP1FCMM16	FP1E2MM16
24	FP1LCMM24	FP1SCMM24*	FP1STMM24	FP1FCMM24	FP1E2MM24
48	FP1LCMM48	FP1SCMM48	FP1STMM48		
96	FP1LCMM96				

\*Available in both simplex and duplex variants.

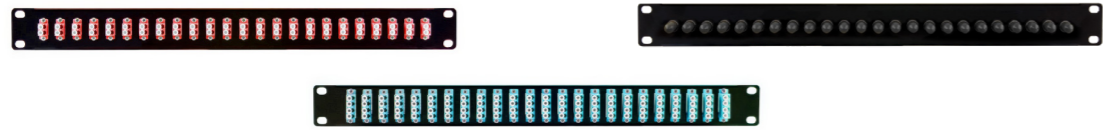


## OM2 Adaptor Type

Fibre Count	LC	SC	ST	FC	E2000
4	FP2LCMM4	FP2SCMM4	FP2STMM4	FP2FCMM4	FP2E2MM4
8	FP2LCMM8	FP2SCMM8	FP2STMM8	FP2FCMM8	FP2E2MM8
12	FP2LCMM12	FP2SCMM12	FP2STMM12	FP2FCMM12	FP2E2MM12
16	FP2LCMM16	FP2SCMM16	FP2STMM16	FP2FCMM16	FP2E2MM16
24	FP2LCMM24	FP2SCMM24*	FP2STMM24	FP2FCMM24	FP2E2MM24
48	FP2LCMM48	FP2SCMM48	FP2STMM48		
96	FP2LCMM96				

\*Available in both simplex and duplex variants.





### OM3 Adaptor Type

Fibre Count	LC	SC	ST	FC	E2000
4	FP3LCMM4	FP3SCMM4	FP3STMM4	FP3FCMM4	FP3E2MM4
8	FP3LCMM8	FP3SCMM8	FP3STMM8	FP3FCMM8	FP3E2MM8
12	FP3LCMM12	FP3SCMM12	FP3STMM12	FP3FCMM12	FP3E2MM12
16	FP3LCMM16	FP3SCMM16	FP3STMM16	FP3FCMM16	FP3E2MM16
24	FP3LCMM24	FP3SCMM24*	FP3STMM24	FP3FCMM24	FP3E2MM24
48	FP3LCMM48	FP3SCMM48	FP3STMM48		
96	FP3LCMM96				

\*Available in both simplex and duplex variants.



### OM4 Adaptor Type

Fibre Count	LC	SC	ST	FC	E2000
4	FP4LCMM4	FP4SCMM4	FP4STMM4	FP4FCMM4	FP4E2MM4
8	FP4LCMM8	FP4SCMM8	FP4STMM8	FP4FCMM8	FP4E2MM8
12	FP4LCMM12	FP4SCMM12	FP4STMM12	FP4FCMM12	FP4E2MM12
16	FP4LCMM16	FP4SCMM16	FP4STMM16	FP4FCMM16	FP4E2MM16
24	FP4LCMM24	FP4SCMM24*	FP4STMM24	FP4FCMM24	FP4E2MM24
48	FP4LCMM48	FP4SCMM48	FP4STMM48		
96	FP4LCMM96				

\*Available in both simplex and duplex variants.



# Complete Fibre Cleaning Kit



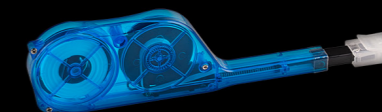
## INSTALLATION & MAINTENANCE

A fibre optic cleaning kit suitable for installation and maintenance has all the cleaning supplies necessary for 1.25mm, 2.5mm and MPO end-face cleaning.



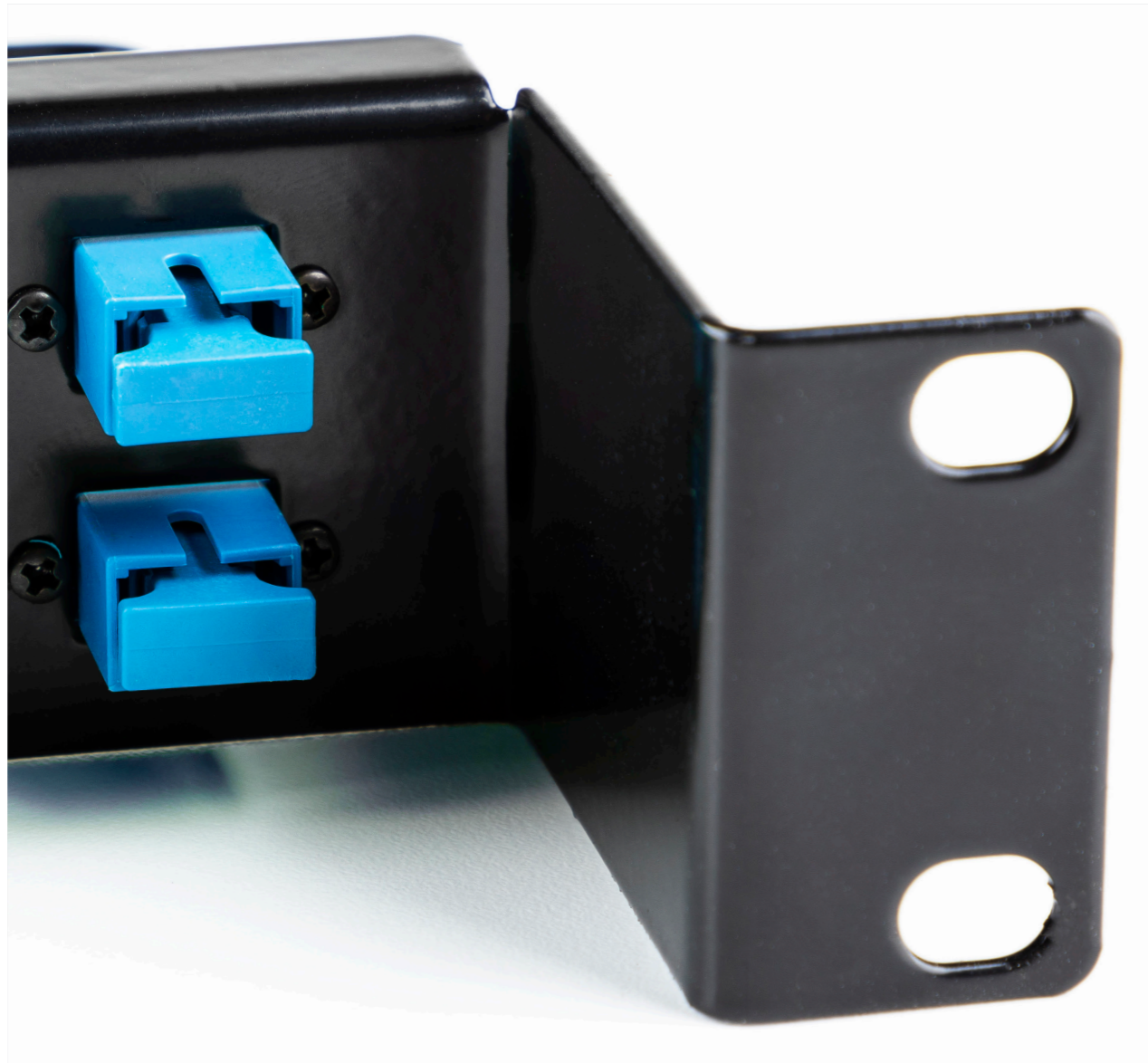
## ORGANISATION ON-SITE

Supplied in a robust Peli case ensuring long life, protection and organisation on-site.



# Recessed Panels

1U 19" rack mount recessed panel which can support upto 48 (LC) fibres utilising 24 duplex LC adaptors or 24 SC simplex adaptors. This panel provides a cost effective cable management solution for installers and features labelling and port identification areas on the front. The rear cable management bar enables a cable support tie point to minimise strain on the cables.



# Singlemode 1U Recessed Panels



## OS2 Adaptor Type

	LC/UPC	SC/UPC	ST/UPC	FC/UPC	E2000/UPC
4	FPRLCSM4	FPRSCSM4	FPRSTSM4	FPRFCSM4	FPRE2SM4
8	FPRLCSM8	FPRSCSM8	FPRSTSM8	FPRFCSM8	FPRE2SM8
12	FPRLCSM12	FPRSCSM12	FPRSTSM12	FPRFCSM12	FPRE2SM12
16	FPRLCSM16	FPRSCSM16	FPRSTSM16	FPRFCSM16	FPRE2SM16
24	FPRLCSM24	FPRSCSM24*	FPRSTSM24	FPRFCSM24	FPRE2SM24
48	FPRLCSM48	FPRSCSM48	FPRSTSM48		
96	FPRLCSM96				

Fibre Count



\*Available in both simplex and duplex variants.

## OS2/APC Adaptor Type

	LC/APC	SC/APC	ST/APC	FC/APC	E2000/APC
4	FPRLCASM4	FPRSCASM4	FPRSTASM4	FPRFCASM4	FPRE2ASM4
8	FPRLCASM8	FPRSCASM8	FPRSTASM8	FPRFCASM8	FPRE2ASM8
12	FPRLCASM12	FPRSCASM12	FPRSTASM12	FPRFCASM12	FPRE2ASM12
16	FPRLCASM16	FPRSCASM16	FPRSTASM16	FPRFCASM16	FPRE2ASM16
24	FPRLCASM24	FPRSCASM24*	FPRSTASM24	FPRFCASM24	FPRE2ASM24
48	FPRLCASM48	FPRSCASM48	FPRSTASM48		
96	FPRLCASM96				

Fibre Count



\*Available in both simplex and duplex variants.

# Multimode 1U Recessed Panels



## OM1 Adaptor Type

	LC	SC	ST	FC	E2000
<b>4</b>	FPR1LCMM4	FPR1SCMM4	FPR1STMM4	FPR1FCMM4	FPR1E2MM4
<b>8</b>	FPR1LCMM8	FPR1SCMM8	FPR1STMM8	FPR1FCMM8	FPR1E2MM8
<b>12</b>	FPR1LCMM12	FPR1SCMM12	FPR1STMM12	FPR1FCMM12	FPR1E2MM12
<b>16</b>	FPR1LCMM16	FPR1SCMM16	FPR1STMM16	FPR1FCMM16	FPR1E2MM16
<b>24</b>	FPR1LCMM24	FPR1SCMM24*	FPR1STMM24	FPR1FCMM24	FPR1E2MM24
<b>48</b>	FPR1LCMM48	FPR1SCMM48	FPR1STMM48		
<b>96</b>	FPR1LCMM96				

Fibre Count



\*Available in both simplex and duplex variants.

## OM3 Adaptor Type

	LC	SC	ST	FC	E2000
<b>4</b>	FPR3LCMM4	FPR3SCMM4	FPR3STMM4	FPR3FCMM4	FPR3E2MM4
<b>8</b>	FPR3LCMM8	FPR3SCMM8	FPR3STMM8	FPR3FCMM8	FPR3E2MM8
<b>12</b>	FPR3LCMM12	FPR3SCMM12	FPR3STMM12	FPR3FCMM12	FPR3E2MM12
<b>16</b>	FPR3LCMM16	FPR3SCMM16	FPR3STMM16	FPR3FCMM16	FPR3E2MM16
<b>24</b>	FPR3LCMM24	FPR3SCMM24*	FPR3STMM24	FPR3FCMM24	FPR3E2MM24
<b>48</b>	FPR3LCMM48	FPR3SCMM48	FPR3STMM48		
<b>96</b>	FPR3LCMM96				

Fibre Count



\*Available in both simplex and duplex variants.

## OM2 Adaptor Type

	LC	SC	ST	FC	E2000
<b>4</b>	FPR2LCMM4	FPR2SCMM4	FPR2STMM4	FPR2FCMM4	FPR2E2MM4
<b>8</b>	FPR2LCMM8	FPR2SCMM8	FPR2STMM8	FPR2FCMM8	FPR2E2MM8
<b>12</b>	FPR2LCMM12	FPR2SCMM12	FPR2STMM12	FPR2FCMM12	FPR2E2MM12
<b>16</b>	FPR2LCMM16	FPR2SCMM16	FPR2STMM16	FPR2FCMM16	FPR2E2MM16
<b>24</b>	FPR2LCMM24	FPR2SCMM24*	FPR2STMM24	FPR2FCMM24	FPR2E2MM24
<b>48</b>	FPR2LCMM48	FPR2SCMM48	FPR2STMM48		
<b>96</b>	FPR2LCMM96				

Fibre Count



\*Available in both simplex and duplex variants.

## OM4 Adaptor Type

	LC	SC	ST	FC	E2000
<b>4</b>	FPR4LCMM4	FPR4SCMM4	FPR4STMM4	FPR4FCMM4	FPR4E2MM4
<b>8</b>	FPR4LCMM8	FPR4SCMM8	FPR4STMM8	FPR4FCMM8	FPR4E2MM8
<b>12</b>	FPR4LCMM12	FPR4SCMM12	FPR4STMM12	FPR4FCMM12	FPR4E2MM12
<b>16</b>	FPR4LCMM16	FPR4SCMM16	FPR4STMM16	FPR4FCMM16	FPR4E2MM16
<b>24</b>	FPR4LCMM24	FPR4SCMM24*	FPR4STMM24	FPR4FCMM24	FPR4E2MM24
<b>48</b>	FPR4LCMM48	FPR4SCMM48	FPR4STMM48		
<b>96</b>	FPR4LCMM96				

Fibre Count



\*Available in both simplex and duplex variants.

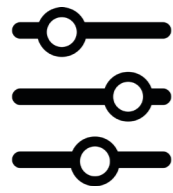
# Zettonics

Modular Optical Infrastructure

Zettonics fibre management solution to revolutionise your optical infrastructure.



Modular | Flexible | Scalable



# How to Order Optical Fibre Patch Panels

The steps outlined below will provide us with the minimum required information to build your fibre solutions order. Please note that our patch panels will be constructed with standard options unless specified on your order.

## 1 Fibre Count

2 / 4 / 8 / 12 / 16 / 24 / 48 / 96

*(Certain fibre counts may not be possible, as this depends on adaptor type)*

## 2 Adaptor Type

**SIMPLEX (Sx)** SC / ST / FC / E2000 / SCA / STA / FCA / E2A

**DUPLEX (Dx)** LC / SC / ST / LCA / SCA / STA

**QUAD** LC / LCA

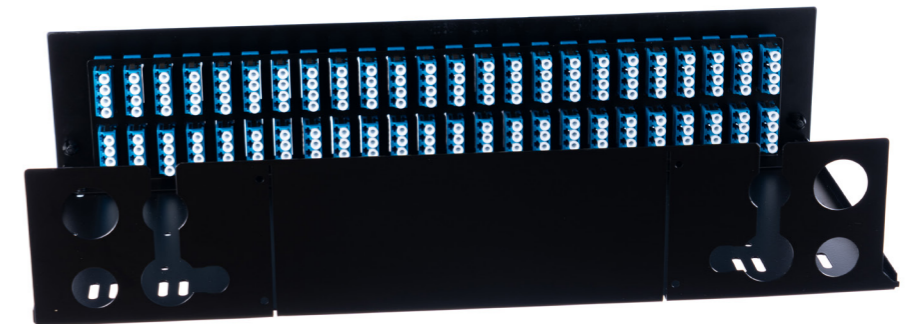
## 3 Fibre Type

**MULTIMODE (MM)** OM1 / OM2 / OM3 / OM4 / OM5

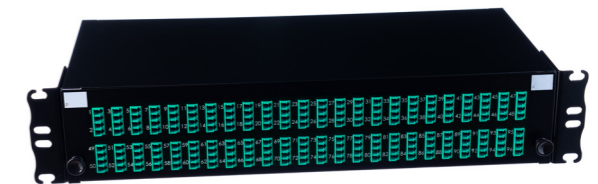
**SINGLEMODE (SM)** OS2

*(OM1 fibre is not held in stock but is available upon request)*

## New 2U Sliding Patch Panels



**Up to 192 Fibres LC** These 2U patch panels mount easily in any standard 19" rack or cabinet to provide efficient and easy management of fibre optic cables.



**Multiple Configurations** Standard configurations are held in stock, other configurations are available upon request. Our standard 2U sliding patch panels include; LC (up to 192 fibres), SC (up to 96 fibres), ST (up to 48 fibres).



# COMPLETE FIBRE SOLUTIONS

## ADDRESS

20 Clarke Road, Bletchley  
Milton Keynes, MK11LG

## PHONE

T : +44 (0) 1908 951000

## WEB MEDIA

[marketing@matrixgn.com](mailto:marketing@matrixgn.com)  
[www.matrixglobalnetworks.com](http://www.matrixglobalnetworks.com)

