

White Paper: Fiber Contamination, Cleaning and Inspection. Introduction.

Despite industry best practice of inspecting and cleaning fiber optic endfaces, contaminated connections remain the number one cause of fiber related problems and test failures in data centers, campus and other enterprise or telecom networking environments.



FIBER CLEANING & INSPECTION

As the industry moves to higher data speeds, more stringent loss budgets and new multifiber connectors, proactively inspecting and cleaning fiber endfaces is more important than ever to ensure network uptime, performance and equipment reliability.

Even when users think they have properly cleaned the fiber, every connector endface either field terminated or factory terminated should always be inspected before connecting to a component or piece of equipment. This document covers the tools and techniques for inspection and cleaning of fiber end faces.

Clean Fiber Means Performance

Every fiber installation relies on proper endface cleaning practices for good reason. Network performance is only as good as the weakest link, and the weakest link is wherever a fiber endface is exposed – whether at a patch panel, equipment port or at the end of a patch cord or jumper.

Regardless of the type of fiber, application or data rate, the transmission of light requires a clear pathway along a link, including through any passive connections or splices along the way. A single particle on the core of a fiber can cause loss and reflections, resulting in high error rates and degraded network performance. Contamination on a fiber endface as shown in Figure 1 can also adversely impact the interface of expensive optical equipment, and in some cases even render equipment inoperative.

With fiber networks at the core of a business's most important asset – the data center – and with the need to keep up with consumer demand for high-speed access to information anywhere and anytime, downtime and poor network performance are simply no longer an option. As network applications require more bandwidth and transmission speeds continue to climb from 1 and 10 gigabits per second (Gbps) to 40 and 100 Gbps, loss budgets have become tighter than ever. Dirt, dust and other contaminants are the enemies of these higher-speed data transmission rates over fiber networks. It is therefore critical that all optical connections be kept free of contamination to avoid application performance issues.

With contamination being the single greatest cause of fiber failures, spending the extra few seconds to properly inspect and, if necessary, clean every connector endface will save time and money in the long run.

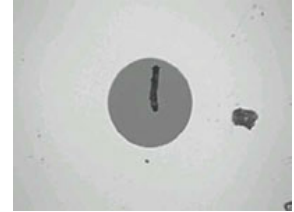


Figure 1: Dirty fiber endfaces as shown here can degrade network performance or damage equipment

While accidentally touching a fiber endface and working in dirty, dusty construction environments are known causes of contamination, there are plenty of other ways to mishandle fiber that may not be obvious. Brushing an endface on clothing that can contain body oils, lint or other substances can cause contamination. In fact, any time an endface is exposed to the surrounding environment, it is subject to contamination – even if it was recently cleaned. Dust in the air can easily collect on a fiber endface, especially in the presence of static electricity.

Contamination also easily migrates from one port to another every time a connector endface is mated. Even a dust cover designed to protect the fiber endface can be a significant source of contamination. Unfortunately, many users are under the impression that if the endface was previously protected by a dust cover, it must be clean. However, no one can really know for sure what was in that dust cover. This is even the case for endfaces on new factory-terminated connectors. While dust caps are great at preventing damage to the endface, the plastic used to create dust caps can emit a residue as it deteriorates over time and the surface of the cap may contain mold-release substances used in high-speed production processes. Therefore you should not be surprised to find a contaminated endface upon removal of a protective cap on a connector fresh out of the bag.

Many also believe that an endface plugged into a piece of equipment must be clean and can therefore be unplugged and remated without concern. However, this too can cause contaminants to pass from one endface to another. Even if the initial contamination was outside of the fiber core, mating can break up a contaminant and cause particles to travel across the endface and redeposit on the core. The same holds true for equipment ports, which are often overlooked as being a source of contamination.

Inspecting for Assurance

It is not enough to just clean every fiber endface. Users have no way of knowing if the endface is clean unless they inspect it using a fiber inspection tool designed specifically for that purpose, such as a professional video microscope or a handheld fiber microscope. That is why the golden rule is to always inspect, and if necessary, clean and inspect again before connecting.

In fact, the very act of cleaning the endface can cause contamination. Every endface should be inspected after every cleaning attempt.

This is especially a concern for multi-fiber connectors such as the multi-fiber push-on (MPO) style connectors that are rapidly becoming the norm in today's data center fiber backbone channels as the required interface for 40 and 100 gigabit Ethernet (GbE) applications (see Figure 2).

Consider a 12-fiber MPO interface with an array that features a much larger surface area than a single fiber connector. When cleaning these larger surface areas, it is much easier to move contaminants from one fiber to another within the same array. And the larger the array, the higher the risk. With 24-, 48- and 72-fiber MPOs used in high-density fiber interconnects, the greater number of fibers are more difficult to control and not all the fibers always protrude at the same height. Height variances across the fibers in a single multifiber connector can increase the risk of not every fiber being properly and equally cleaned.

Inspection Tools

There are two main types of inspection tools – optical and video.

Tube-shaped and compact, optical microscopes (figure 2a) allow direct inspection of the end-faces. While these are popular due to their low cost, they don't provide views of end-faces inside equipment or through bulkheads.

Video inspectors consist of a small optical probe connected to a handheld display (figure 2b). The size of the probe makes it excellent for examining ports in hard-to-reach places. A large display easily enables identification of end-face defects. Some provide autofocus and automatic image centering for faster and easier inspection. These probes are also safer because they show an image and not the actual end-face, thereby reducing the risk of exposing one's eye to harmful radiation.

Grading and Certification via Standards

One of industry's longtime concerns with manually inspecting fiber endfaces has been that determining cleanliness has largely been a subjective and inconsistent process. What one person deems as clean can vary greatly from another. Additional variables such as skill level, years of experience, eyesight, ambient lighting and the fiber inspection tool being used can also lead to inconsistencies in determining fiber endface cleanliness. With more fiber networks being installed and maintained by a greater number of individuals, there is also a greater chance of inexperience regarding what constitutes endface cleanliness.

In an effort to establish consistency in fiber inspection and achieve more repeatable results for performance across multiple endfaces, the IEC developed the 61300-3-35 "Basic Test and Measurement Procedures Standard for Fiber Optic Interconnecting Devices and Passive Components." This standard contains specific cleanliness grading criteria to assess pass or fail certification for inspection of a fiber endface, removing the human subjectivity factor.



Figure 2: MPO connectors required for 40 and 100 GbE applications should always be inspected as it can be difficult to ensure that all fibers in the array were properly cleaned.



Figure 2a: Optical Microscope



Figure 2b: Fluke Networks FI-500 FiberInspector™ Micro display and probe.

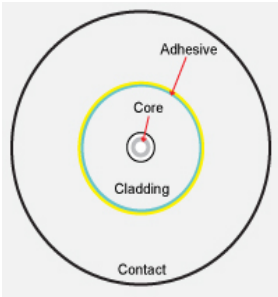


Figure 3: IEC 61300-3-35 grades fiber cleanliness based on the quality and size of scratches and defects in each region of the endface.

The certification criteria in IEC 61300-3-35 varies based on connector type and fiber size, as well as types of defect. Defects include pits, chips, scratches, cracks, particles and embedded and loose debris, and the IEC standard categorizes them into two groups - scratches and defects. Scratches are identified as permanent linear surface features while defects include all detectable non-linear features that can typically be cleaned. Certification to determine pass or fail is based on the number of scratches and defects found in each measurement region of the fiber endface, including the core, cladding, adhesive layer and contact zones, as well as the quantity and size of the scratches and defects (see Figure 3).

For example, as shown in Table 1, multimode fiber with polished connectors can have no scratches greater than 3 µm or defects greater than 5 µm in the fiber's core. Within the cladding zone, there can be no scratches or defects greater than 5 µm in width, 5 defects ranging between 5 and 10 µm in width and no limit on the number of defects less than 5 µm in width. The number and size of scratches and defects allowed in each zone varies based on the connector type and diameter.

Zone	IEC 61300-3-35 Recommended Acceptance Criteria for Multimode Polished Connectors	
	Scratches (maximum number of a given dimension)	Defects (maximum number of a given dimension)
Core	No limit ≤ 3 µm None > 3 µm	4 ≤ 5 µm None > 5 µm
Cladding	No limit ≤ 5 µm None > 5 µm	No limit > 5 µm 5 from 5 µm to 10 µm None > 10 µm
Adhesive	No limit	No limit
Contact	No limit	No Limit <20 µm 5 ≤ 30 None > 30 µm

Table 1. IEC 61300-3-35 Recommended Acceptance Criteria for Multimode Polished Connectors

While the IEC 61300-3-35 ED.2 standard can be used as a guideline for manually grading cleanliness, a manual procedure would require technicians to determine the size and location of the scratches and defects, which can still introduce human error and inconsistency not to mention take a lot of time.

Thankfully, automated certification solutions like Fluke Networks' FI-7000 FiberInspector Pro use algorithmic processes to automatically and quickly inspect, grade and certify fiber endfaces based on the criteria of the IEC standard.

These types of devices eliminate human subjectivity and result in faster, more accurate and repeatable results to help ensure optimum fiber network performance (see the FI-7000's screen, below).

Knowing What to Inspect and Clean

The best answer to the question of what to inspect and clean is everything – every endface should be inspected, and every endface that fails IEC 61300-3-35 certification should be cleaned (see Figure 4). If upon inspection, the endface passes IEC certification, do not clean it. Cleaning can attract dust due to static electricity.

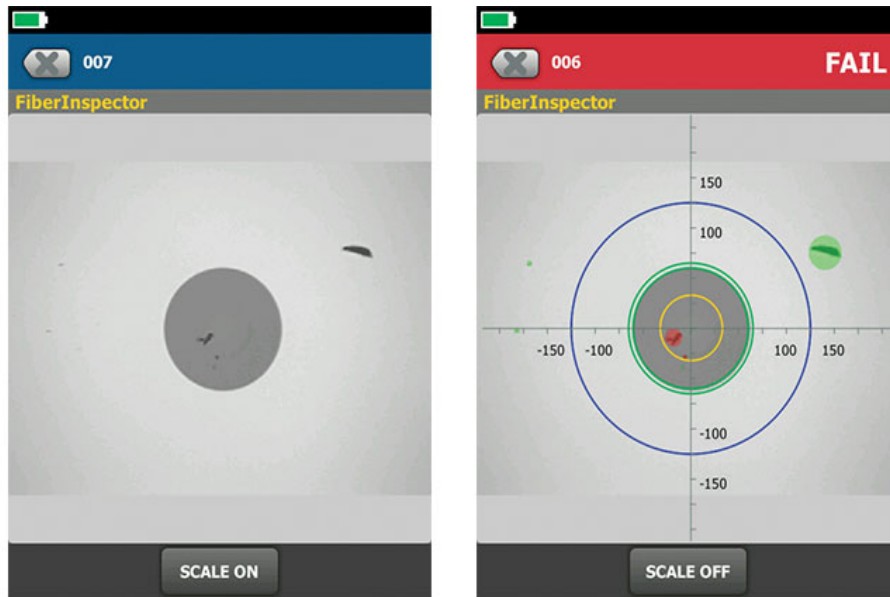


Figure 4: Is the endface shown on the left clean or dirty? Automated certification demonstrates that it is dirty per IEC 61300-3-35 due to defects in the core.

Any and all endfaces, even brand new ones and factory-terminated plugs and pigtails, should be inspected for cleanliness before mating. That includes both ends of fiber optic test cords, fiber jumpers and pre-terminated trunk cables.

If using an adapter to mate two plugs, the endfaces on both sides and the sleeve of the adapter itself should be inspected and cleaned before inserting them into the adapter. Interchangeable adapters used with optical power meters also need to be inspected and cleaned on a regular basis. Often the adapter has a light shield with pin hole that can accumulate debris. Always consult the documentation that came with the testing equipment as some vendors require sending certain adapters back for factory cleaning.

When testing or troubleshooting any equipment, including the tester itself, all plugs and ports should be inspected and cleaned before mating. That includes test equipment ports, adapters, test cord endfaces and any ports into which you will be connecting the test cord.

As previously mentioned, dust caps and mating can be a source of contamination. Therefore every time a fiber endface is unplugged or removed from a dust cap or port, even when it is brand new, it should be inspected and cleaned as necessary prior to being inserted. Ports should also always be inspected and cleaned before inserting a connector, even if one was just recently removed.

Cleaning for Performance

Properly cleaned end-faces (Figure 5) can actually “add” up to 1.39 dB onto your loss allowance. In other words, if you have a fiber plant with an overall loss of 5.0 dB against a specified budget of 4.5 dB, cleaning any dirty end-faces may help to drop the link loss down to just above 3.6 dB, providing a “Pass” and plenty of headroom.

Consequently, it is important to wisely choose your cleaning tools and methods while avoiding commonly practiced bad habits. Contamination easily migrates from one port to another every time a connector endface is mated. So it’s essential that port connections are clean. Quick Clean™ Cleaning pens are dry cleaners that are ideal for cleaning ports on devices and patch panels, but not patch cords where end-faces may be exposed to grease. Three sizes of Fluke Networks Quick Clean pens are available (Figure 6):

1. 1.25 mm for LC and MU connectors and end-faces;
2. 2.5 mm for SC, ST, FC and E2000 connectors and end-faces;
3. MPO for MPO connectors.

If inspection reveals that contamination is not removed after dry cleaning, “wet” cleaning will be required using wipes and solvent. Fabric and composite wipes made of lint-free material provide the absorbency to remove contaminants from the endface. In general, it is recommended to avoid cleaning against a hard surface. When using a wipe, typically one or two short (i.e., 1 cm) strokes on the cleaning material is sufficient. Enough pressure should be applied so that the wipe can conform to the end-face geometry and ensure that the entire end-face has been cleaned.

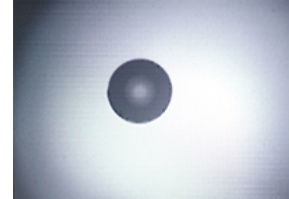


Figure 5: Clean fiber end-face.



Figure 6: The Fluke Networks Quick Clean™ pens.

Using the right solvent with wipes is critical. Solvents add a chemical action that increases the cleaning ability of the wipe to lift particles and debris from the endface while eliminating the issue of static charge with dry cleaning. It is important to avoid using excessive amounts of solvent, which can leave behind a film of dissolved contaminants. To remove excess solvent, wet cleaning should be followed by dry cleaning by either moving to the dry area on the wipe (see figure 7) or by following up with new dry wipe. Just be sure to not overdo it to avoid creating static charge.

The solvent itself should also be specially formulated for fiber endface cleaning, such as Fluke Networks' Fiber Optic Solvent Pen. While isopropyl alcohol (IPA) was used for many years to clean fiber endfaces, specialized solvents have a lower surface tension that makes them far more effective at enveloping debris for removal and dissolving contaminants (see Figure 8). Such solvents also provide antistatic properties, so dust in the air is less likely to be attracted to the end-face of the connector. IPA can also leave behind a "halo" as it dries that not only causes attenuation, but also can be difficult to remove. No solvent should remain on the endface after cleaning.

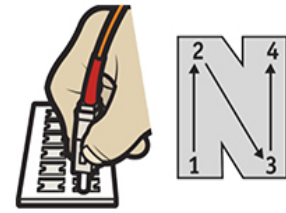


Figure 7: "Wet to Dry": cleaning methodology Using a Fluke Networks Optic cleaning card. The solvent drop is placed at "1", and the end face moved across the cleaning material from "1" to "4"

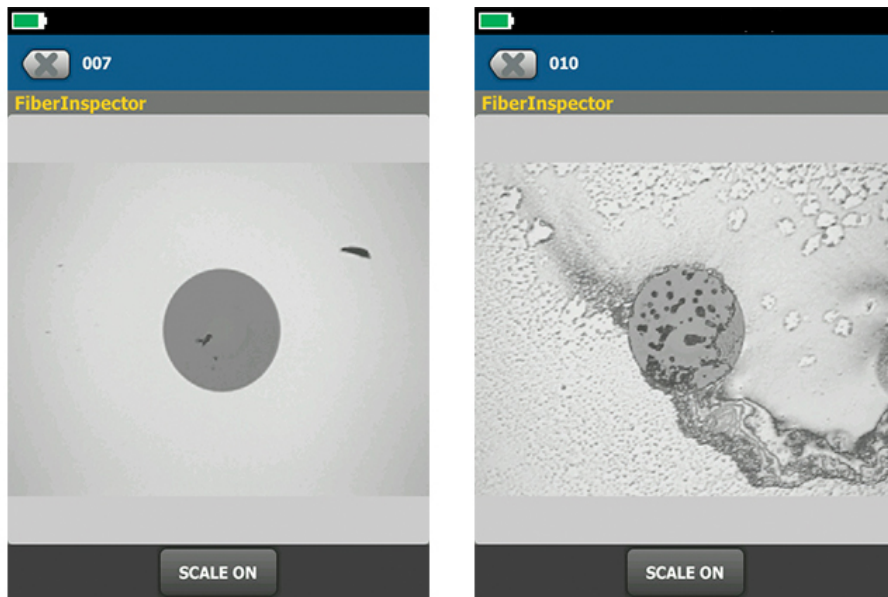


Figure 8: Specialized solvents (left) are far more effective at cleaning endfaces than IPA that can leave behind a residue (right).

To wet clean fiber endfaces inside ports or equipment, specially designed lint-free swabs are used instead of wipes (*see Cleaning Kits, below*). When using swabs for port cleaning, it is important to apply just enough pressure to clean the endface while rotating the swab several times in one direction. When using solvents with port cleaning, it is even more important to not use excessive solvent that can saturate the plug interface. The evaporation rate of a solvent becomes significant with port cleaning as it is harder to guarantee removal of all solvent. Lingering solvent can become trapped during mating and cultivate a harmful residue over time. This is another reason to use solvents that are specially formulated for cleaning fiber—these solvents stay around long enough to work but evaporate much faster than IPA.

It is also important to remember that these consumables are just that, meaning that once a wipe or swab is used to clean an endface, it should be immediately discarded.

Reusing a dirty wipe or swab is one of the easiest ways to spread contamination. While cleaning of jumpers and test reference cord endfaces is important, these components are also consumables that eventually fail—sometimes cleaning is not enough if these components have reached their end of life following the vendor's specified number of insertions.

Summary

If network uptime, signal transmission performance and equipment reliability are important to your business, skimping on inspecting and cleaning fiber optic endfaces can result in dire consequences. And just because you may think you properly cleaned, does not mean you can forego inspection. Not only are best practices for fiber cleaning essential, but every endface should be carefully inspected and certified per the IEC 61300-3-35 standard prior to making a mated connection—including both endfaces and ports.

By incorporating fiber inspection and certification into your process, you can eliminate human subjectivity and quickly inspect, grade and certify fiber endfaces per the standard. In doing so, there should be no excuse for network failures due to contaminated endfaces.

FI-7000 FiberInspector Pro Automatically Certifies Fiber EndFaces to IEC Standards

Fluke Networks' FI-7000 FiberInspector Pro certifies fiber endfaces to the IEC 61300-3-35 industry standard in just two seconds, providing automated PASS/FAIL results that take the human subjectivity and guesswork out of fiber inspection.

Ideal for inspecting endfaces inside ports or on patch cords, the FI-7000 FiberInspector Pro detects and measures defects found on fiber endfaces and automatically certifies the results based on the IEC 61300-3-35 standard. To provide clear graphical indication of which defects pass or fail the standard's requirements, the FI-7000's pinch-and-zoom touchscreen highlights each defect and highlights the defect's background – defects that fail are colored Red while defects that pass are colored Green.

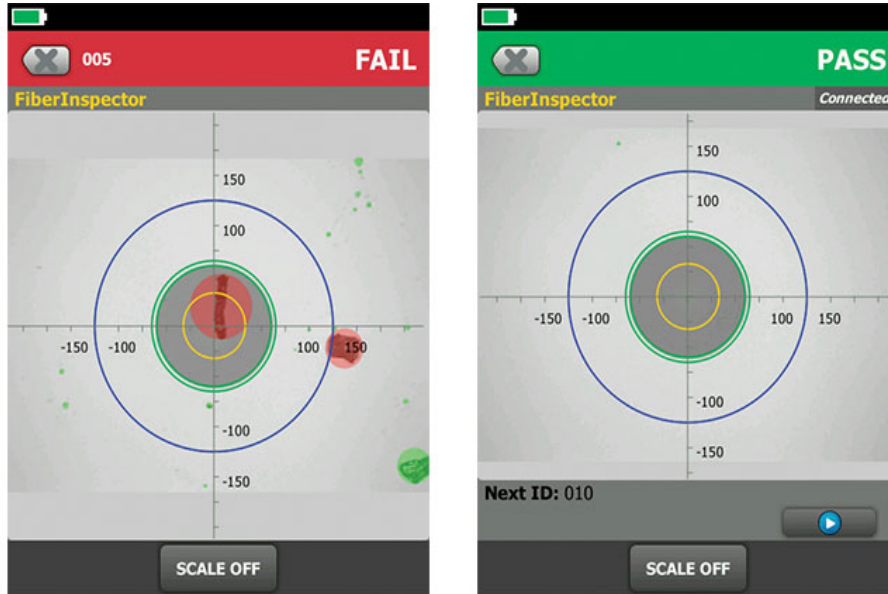


Figure 9: The FI-7000's certification results allow you to quickly determine if the fiber endface pass or fails. An example of a failing endface is shown on the left and a passing endface is shown on the right.

The FI-7000 is built on Fluke Networks' Versiv Cable Certification Platform that enables storing endface images and certification in Versiv test results and taking advantage of Versiv capabilities like ProjX™ for managing job requirements, the Taptive™ user interface for easy set-up and the multifeatured LinkWare Software for managing data and generating professional test reports. The FI-7000's PASS/FAIL fiber endface certification is available to all Versiv inspection camera owners by downloading the latest Versiv firmware.

Fiber Optic Cleaning Kits



Eliminate the #1 cause of fiber optic link failure - contamination - with Fluke Networks' line of cleaning tools. These kits support all fiber connector types in datacenter and campus environments. Our Quick Clean cleaners are available in 1.25, mm, 2.5mm and MPO sizes for easily cleaning fiber end-faces and ports. For wet cleaning, the solvent pen precisely dispenses a specially formulated fiber optic cleaning solution. Kits also include a handy cleaning cube and easy to use cards for convenient wiping of fiber end-faces, plus swabs for cleaning fiber optic ports.

CertiFiber™ Pro Optical Loss Test Set

CertiFiber® Pro reduces the cost of fiber certification by two-thirds and features a three second loss measurement of two fibers at two wavelengths.

CertiFiber Pro integrates with LinkWare™ Live to let you manage jobs and testers from any smart device over Wi-Fi. The Taptive™ User Interface provides simple, animated guidance to eliminate incorrect reference setup and “negative loss” errors. Future-ready design can be easily upgraded to support Cat 5 to Cat 8 certification, OTDR testing and double-ended Pass/Fail certification of fiber optic connector endfaces. It is Encircled Flux compliant out of the box. Analyze test results and create professional test reports using LinkWare PC reporting software.



OptiFiber® Pro OTDR



Fluke Networks' OptiFiber® Pro is the industry's first OTDR built from the ground up to meet the challenges of enterprise fiber optic infrastructures.

OptiFiber Pro OTDR's ultra-short dead zones facilitates the identification of fiber patch cords in virtualized data centers. SmartLoop™ technology enables the testing of two fibers in both directions, and averages the measurements as required by TIA-568.3-D in seconds - without taking the OTDR to the far end.

Future-ready design can be upgraded to support Cat 5 to Cat 8 certification, singlemode and multimode fiber loss and fiber inspection. Integrates with LinkWare™ Live to manage jobs and testers from any smart device.